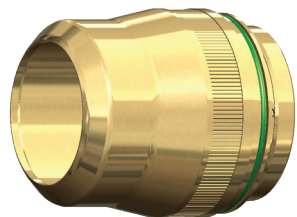


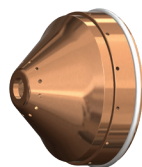
For Lincoln® (Kaliburn®) Systems

400A MILD STEEL - O₂ PLASMA / AIR SHIELD

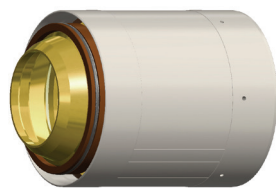
Plasma gas inlet:
120psi/8.4bar
Shield gas inlet:
120PSI/8.4bar



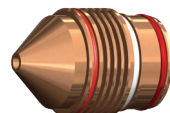
Shield Cap
97-0200



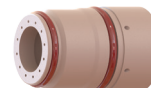
Shield
97-4002



Nozzle Retaining Cap
97-0365



Nozzle
90-0632



Swirl Ring
220631*



Electrode
90-0530



Water Tube
90-0571

ENGLISH

Material Thickness	Preflow (psi)	Plasma (psi)	Shield (psi)	Postflow (psi)	Arc Voltage	Travel Speed (ipm)	Cutting Height	Pierce Height	Pierce Time (msec)	Kerf Width
1/2	30	79	70	76	140	160	.140	.300	500	0.138
5/8					143	135	.130	.350	600	0.141
3/4					145	110	.160	.400	800	0.145
1					148	85	.175	.500	1000	0.153
1-1/4					151	60	.225	.600	1500	0.162
1-1/2					153	50	.260	.700	2000	0.174
1-3/4					157	40	.270	.800	3000	0.186
2					160	33	.280	1.00	4500	0.201
2-1/4*					168	20	.300	.350	1000	0.217
2-1/2*					171	15	.325	.350	1300	0.234
2-3/4*					175	12	.350	.350	1500	0.253
3*					193	8	.350	.350	2000	0.273

* = Edge start required.

† American Torch Tip Company is in no way affiliated with the above-named manufacturer(s). References to the above-named machines, torches and numbers are for your convenience only. American Torch Tip is not necessarily authorized by the above-named manufacturer(s) to provide replacement parts. Most parts advertised for sale are made by, or for, American Torch Tip Company and other parts, as indicated, are original parts manufactured by the above-named OEM and are simply being resold by American Torch Tip Company. Part numbers followed by an * are manufactured by the respective OEM.

For Lincoln®
(Kaliburn®) Systems
#90-400-L
#90-400-R