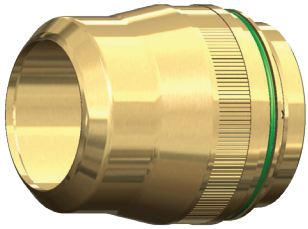


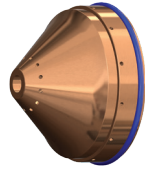
For Lincoln® (Kaliburn®) Systems

275A MILD STEEL - O₂ PLASMA / AIR SHIELD

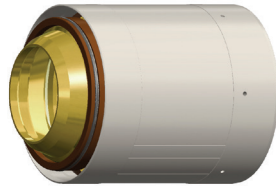
Plasma gas inlet:
120psi/8.4bar
Shield gas inlet:
120PSI/8.4bar



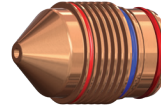
Shield Cap
97-0200



Shield
97-0491



Nozzle Retaining Cap
97-0365



Nozzle
97-0279



Swirl Ring
90-0436



Electrode
97-0276



Water Tube
90-0571

ENGLISH

Material Thickness	Preflow (psi)	Plasma (psi)	Shield (psi)	Postflow (psi)	Arc Voltage	Travel Speed (ipm)	Cutting Height	Pierce Height	Pierce Time (msec)	Kerf Width
1/2	20	81	70	79	150	125	.140	.300	500	0.119
5/8					155	105	.135	.325	600	0.125
3/4					159	90	.120	.350	800	0.132
1					171	65	.160	.400	1000	0.146
1-1/4					172	45	.175	.500	1500	0.161
1-1/2					174	25	.235	.750	2000	0.176
1-3/4					185	20	.290	.350	1500	0.192
2*					188	15	.350			0.210
2-1/4*					195	13	.375			0.227
2-1/2*					202	9	.385			0.246

* = Edge start required.

† American Torch Tip Company is in no way affiliated with the above-named manufacturer(s). References to the above-named machines, torches and numbers are for your convenience only. American Torch Tip is not necessarily authorized by the above-named manufacturer(s) to provide replacement parts. Most parts advertised for sale are made by, or for, American Torch Tip Company and other parts, as indicated, are original parts manufactured by the above-named OEM and are simply being resold by American Torch Tip Company. Part numbers followed by an * are manufactured by the respective OEM.

For Lincoln®
(Kaliburn®) Systems
#90-275-L
#90-275-R