

AMERICAN
TORCH TIP **ATTC**[®]

CREATING A BETTER
EXPERIENCE

PHDX[™]
HIGH DENSITY PLASMA
TORCHES & CONSUMABLES



Suitable for use with
LINCOLN[®] (KALIBURN[®])

SPIRIT[®] 275/400
PROLINE[™] 2200/2600 SYSTEMS

AMERICAN TORCH TIP[®]
6212 29th Street East, Bradenton, FL
P: 941-753-7557
E: Sales@attcusa.com
AmericanTorchTip.com



70 - 275 AMP TORCH KITS

Part #	Amp	Power Supply	Plasma Gas	Shield Gas	Material	Notes	CleanCut™ Technology
90-070-L 90-070-R	70	275	O ₂	Air	Mild Steel	Standard Cutting	✓
90-100-L 90-100-R	100	275	O ₂	Air	Mild Steel	Standard Cutting	✓
90-150-L 90-150-R	150	275	O ₂	Air	Mild Steel	Standard Cutting	✓
90-275-L 90-275-R	275	275	O ₂	Air	Mild Steel	Standard Cutting	✓

PLASMA HIGH DENSITY

LOWER OPERATING COSTS

- Bevel less than 2°
- Minimal dross

LIFETIME WARRANTY

- The best torch warranty in the industry

MADE IN THE USA

- Engineered to stringent tolerances

QUALITY CHECKED

- All consumables are tested for dimensional accuracy

LIQUID COOLED SHIELD

- Provides a higher consumable life and higher piercing capability



Qty	Parts
1	Torch Body
10	Electrodes
10	Nozzles
2	Swirl Rings
1	Nozzle Retaining Cap
2	Shields
1	Shield Cap
1	Consumables Removal Tool
1	Water Tube Removal Tool
1	1/4 oz. Silicon Lubricant
1	O-ring Kit

CLEANCUT™ TECHNOLOGY

Upgrade Your Consumables

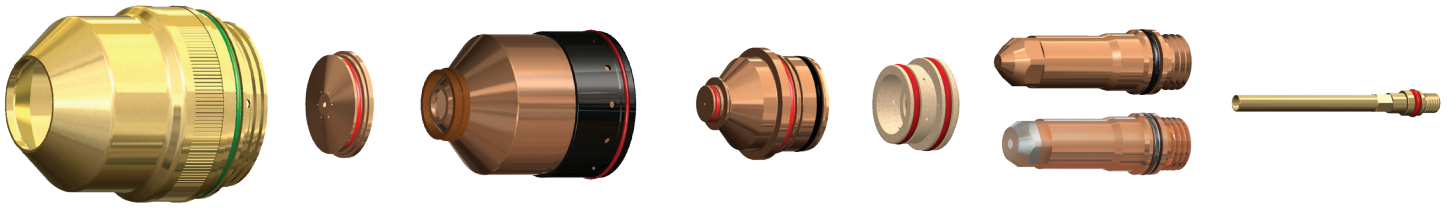
CleanCut™'s patented nozzle and electrode allow your consumables to run longer and cut cleaner making for less downtime and post grind clean-up.

Learn more at:

AmericanTorchTip.com/cleancut



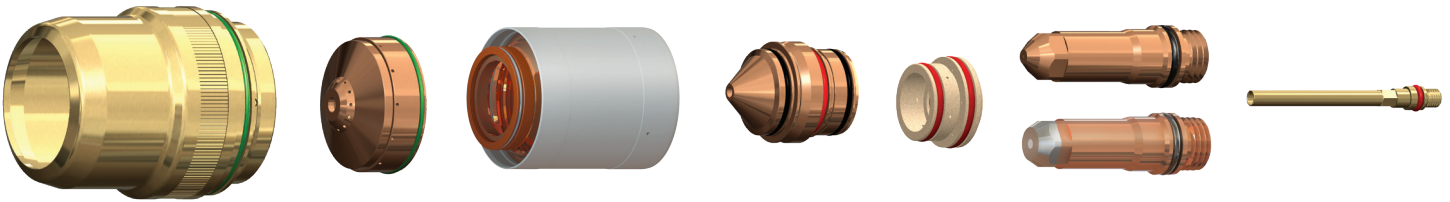
50 - 150 AMP CONSUMABLES



(Typical setup shown. Parts for your application may look slightly different)

Amp	Shield Cap	Shield	Nozzle Retaining Cap	Nozzle	Swirl Ring	Electrode	CleanCut™ Electrode	Water Tube
Mild Steel								
50	90-0747	90-0555	90-0754	90-0554	90-0553	90-0552		90-0340
70	90-0747	90-0189	90-0756	90-0188	90-0179	90-0187	90-0566	90-0340
100	90-0747	90-0183	90-0756	90-0182	90-0179	90-0187	90-0566	90-0340
150	90-0747	90-0183	90-0756	90-0182	90-0179	90-0181	90-0665	90-0340
Stainless Steel								
50	90-0747	90-0202	90-0755	90-0201	90-0180	90-0308		90-0340
70	90-0747	90-0338	90-0755	90-0337	90-0179	90-0339		90-0340
100	90-0747	90-0198	90-0755 (H35) 90-0756 (N ₂)	90-0197	90-0179	90-0307		90-0340
Aluminum								
45	90-0747	90-0202	90-0756	90-0201	90-0180	90-0308		90-0340
130	90-0747	90-0198	90-0755 (H35) 90-0756 (Air)	90-0197	90-0179	90-0307 (H35) 90-0181 (Air)		90-0340

200 - 400 AMP CONSUMABLES

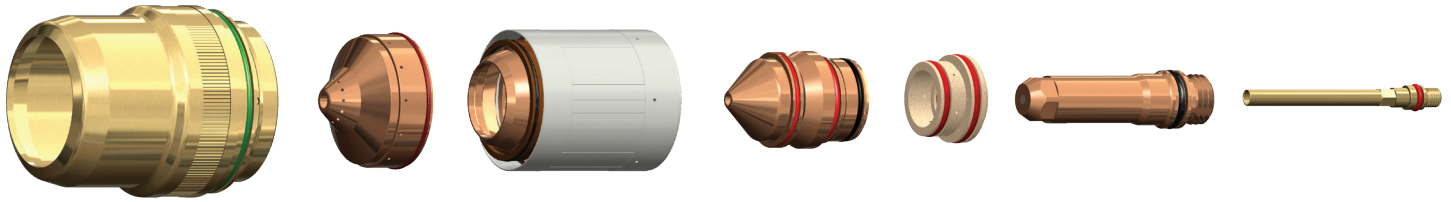


(Typical setup shown. Parts for your application may look slightly different)

Amp	Shield Cap	Shield	Nozzle Retaining Cap	Nozzle	Swirl Ring	Electrode	CleanCut™ Electrode	Water Tube
Mild Steel								
200	90-4000	90-2002	90-2601	90-0354	90-0353	90-0352	90-0666	90-0340
275	90-4000	90-2602	90-2601	90-0439	90-0436	90-0435	90-0668	90-0340
400	90-4000	90-4002	90-4001	90-0632	*220631	90-0629	90-0530	90-0571
Stainless Steel								
200	90-0637	90-0762	*220758	90-0343	90-0342	90-0307		90-0340
275	90-0637	90-0763	*220758	90-0406	90-0405	90-0307		90-0340
400	90-0637	90-0707	*220712	90-0708	90-0405	90-0709		90-0571
Aluminum								
200	90-0637	90-0672	*220759	90-0346	90-0342	90-0307		90-0340
275	90-0637	90-0763	*220758	90-0406	90-0405	90-0307		90-0340
400	90-0637	90-0707	*220712	90-0708	90-0405	90-0709		90-0571

* See disclaimer on back page.

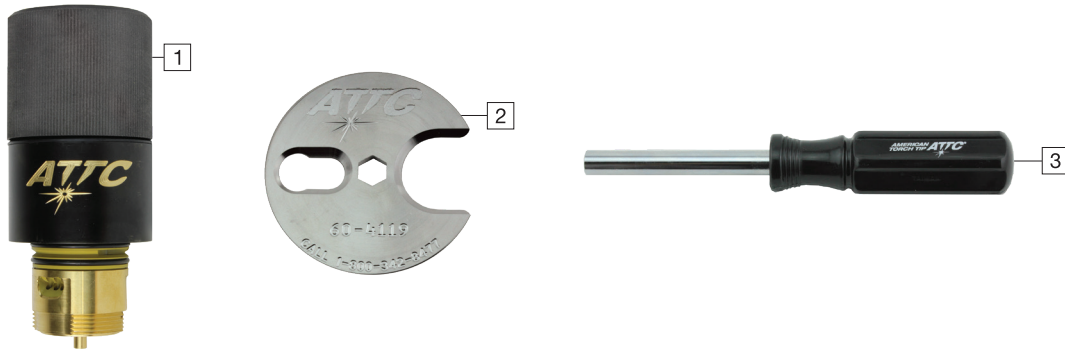
70 - 400 AMP BEVELING CONSUMABLES



(Typical setup shown. Parts for your application may look slightly different)

Amp	Shield Cap	Shield	Nozzle Retaining Cap	Nozzle	Swirl Ring	Electrode	Water Tube
Mild Steel - Bevel							
70	90-0637	90-0742	*220845	90-0806	90-0179	90-0802	90-0700
150	90-0637	90-0742	*220740	90-0646	90-0179	90-0649	90-0700
270	90-0637	90-0741	*220740	90-0542	90-0436	90-0541	90-0571
400	90-4000	90-4002	90-4001	90-0632	*220631	90-0629	90-0571
Stainless Steel - Bevel							
150	90-0637	90-0738	*220739	90-0656	90-0179	90-0606	90-0571
275	90-0637	90-0738	*220739	90-0607	90-0405	90-0606	90-0571

PHDX™ PARTS & ACCESSORIES



Pos	Part #	Desc
1	52-0706-L	Torch body - Left Handed
1	52-0706-R	Torch body - Right Handed
2	60-4119	Consumable tool
3	60-0000	Water tube tool
	90-8879	Torch kit: O-rings, Water tube, Seal
	90-8880	Quick disconnect kit: O-ring, Connector

American Torch Tip Company is in no way affiliated with the above-named manufacturer(s). References to the above-named machines, torches and numbers are for your convenience only. American Torch Tip is not necessarily authorized by the above-named manufacturer(s) to provide replacement parts. Most parts advertised for sale are made by, or for, American Torch Tip Company and other parts, as indicated, are original parts manufactured by the above-named OEM and are simply being resold by American Torch Tip Company. Part numbers including an * are manufactured by the respective OEM.