

AMERICAN
TORCH TIP **ATTC**[®]

CREATING A BETTER
EXPERIENCE



PHD[®] 2000



High Density
PLASMA

TORCHES & CONSUMABLES

AMERICAN TORCH TIP[®]
6212 29th Street East, Bradenton, FL
941-753-7557
Sales@attcusa.com
AmericanTorchTip.com



50 - 200 AMP TORCH KITS

Part #	Amp	Power Supply	Plasma Gas	Shield Gas	Material	Notes
55-9901	200	2000	O ₂	Air	Mild Steel	
55-9903	100-130	2000	O ₂	Air	Mild Steel	
55-9905	50	2000	O ₂	O ₂	Mild Steel	
55-9908	200	2000	O ₂	Air	Mild Steel	
55-9910	100-130	2000	O ₂	Air	Mild Steel	

PLASMA HIGH DENSITY

LOWER OPERATING COSTS

- Bevel less than 2°
- Minimal dross

LIFETIME WARRANTY

- The best torch warranty in the industry

MADE IN THE USA

- Engineered to stringent tolerances

QUALITY CHECKED

- All consumables are tested for dimensional accuracy



Qty	Parts
1	Torch Body
10	Electrodes
10	Nozzles
2	Swirl Rings
1	Nozzle Retaining Cap
2	Shields
1	Shield Cap
1	Consumables Removal Tool
1	Water Tube Removal Tool
1	1/4 oz. Silicon Lubricant
1	O-ring Kit

CLEANCUT™ TECHNOLOGY

Upgrade Your Consumables

CleanCut™'s patented nozzle and electrode allow your consumables to run longer and cut cleaner making for less downtime and post grind clean-up.

Learn more at:
AmericanTorchTip.com/cleancut



† American Torch Tip Company is in no way affiliated with the above-named manufacturer(s). References to the above-named machines, torches and numbers are for your convenience only. American Torch Tip is not necessarily authorized by the above-named manufacturer(s) to provide replacement parts. Most parts advertised for sale are made by, or for, American Torch Tip Company and other parts, as indicated, are original parts manufactured by the above-named OEM and are simply being resold by American Torch Tip Company. Part numbers followed by an * are manufactured by the respective OEM.

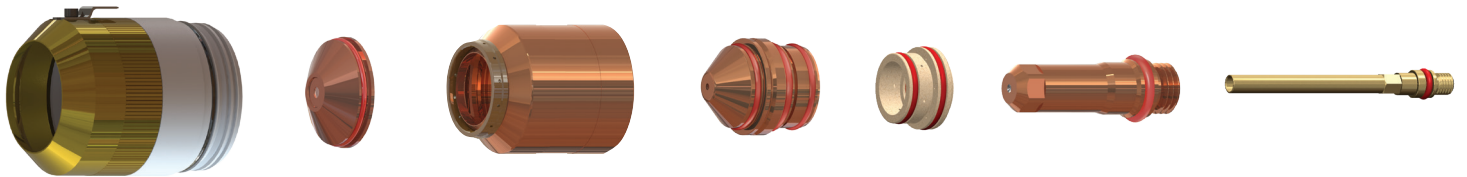
40 - 100 AMP CONSUMABLES



(Typical setup shown. Parts for your application may look slightly different)

Amps	Shield Cap	Shield	Nozzle Retaining Cap	Nozzle	Swirl Ring	Electrode	Water Tube
Mild Steel							
50	55-0173	55-0555	55-0313	55-0554	55-0553	55-0552	60-0340
100	55-0173	55-0983	55-0176	55-0510	55-0179	55-0181 55-0665 (CleanCut™)	60-0340
Stainless Steel							
40	55-0173	55-0202	55-0304	55-0901	55-0180	55-0308	60-0340
100	55-0173	55-0198	55-0176	55-0197	55-0179	55-0307	60-0340
Aluminum							
40	55-0173	55-0202	55-0304	55-0901	55-0180	55-0308	60-0340
100	55-0173	55-0198	55-0304 (Air) 55-0176 (H35)	55-0197	55-0179	55-0181 (Air) 55-0307 (H35)	60-0340

200 AMP CONSUMABLES

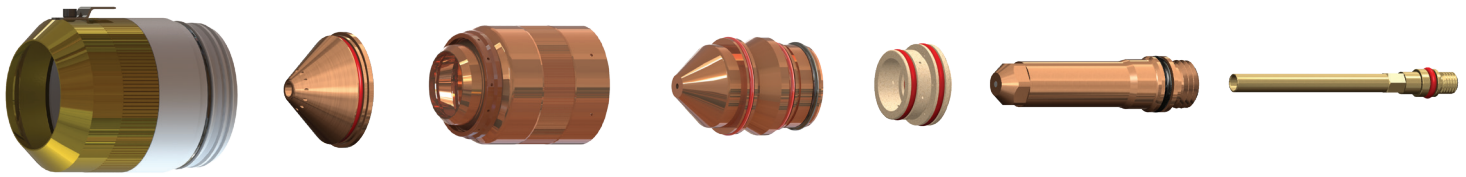


(Typical setup shown. Parts for your application may look slightly different)

Amps	Shield Cap	Shield	Nozzle Retaining Cap	Nozzle	Swirl Ring	Electrode	Water Tube
Mild Steel							
200	55-0398	55-0440	55-0433	55-0439 (2000) 55-0200 (200)	55-0436	55-0435	60-0340
Stainless Steel							
200	55-0398	55-0407	55-0344	55-0406	55-0405	55-0307	60-0340
Aluminum							
200	55-0398	55-0440 (Air) 55-0407 (N ₂)	55-0433 (Air) 55-0344 (N ₂)	55-0200 (Air) 55-0406 (N ₂)	55-0436 (Air) 55-0405 (N ₂)	55-0435 (Air) 55-0307 (N ₂)	60-0340

† American Torch Tip Company is in no way affiliated with the above-named manufacturer(s). References to the above-named machines, torches and numbers are for your convenience only. American Torch Tip is not necessarily authorized by the above-named manufacturer(s) to provide replacement parts. Most parts advertised for sale are made by, or for, American Torch Tip Company and other parts, as indicated, are original parts manufactured by the above-named OEM and are simply being resold by American Torch Tip Company. Part numbers followed by an * are manufactured by the respective OEM.

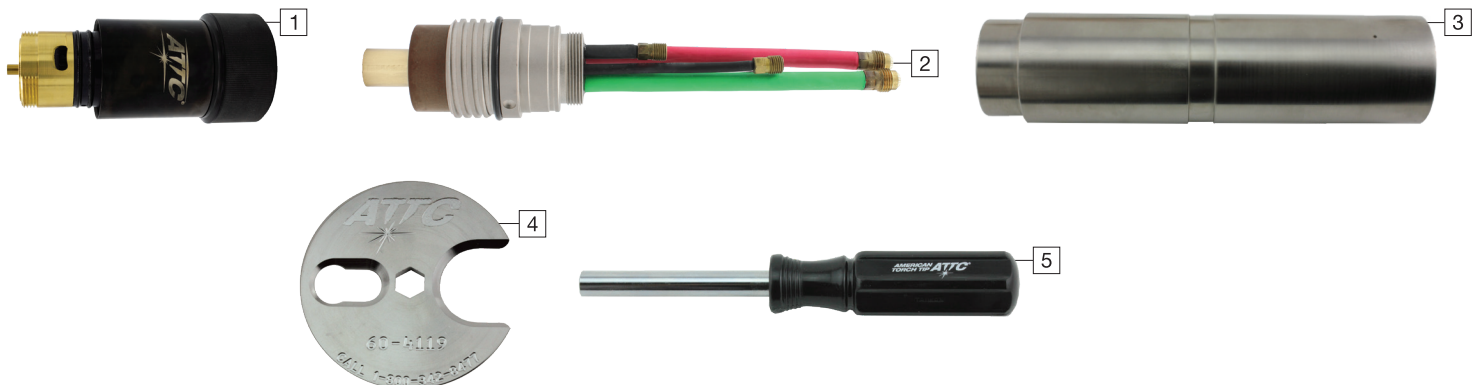
130 - 260 AMP BEVELING CONSUMABLES



(Typical setup shown. Parts for your application may look slightly different)

Amps	Shield Cap	Shield	Nozzle Retaining Cap	Nozzle	Swirl Ring	Electrode	Water Tube
Mild Steel							
130	55-0398	55-0645	55-0603	55-0646	55-0179	55-0649	60-0700
260	55-0998	55-0545	55-0603	55-0542	55-0436	55-0541	60-0571
Stainless Steel							
130	55-0398	55-0609	55-0608	55-0656	55-0179	55-0606	60-0571
200	55-0998	55-0609	55-0608	55-0607	55-0405	55-0606	60-0571

PHD® 2000 PARTS & ACCESSORIES



Pos	Part #	Desc
1	55-0162	Torch body
2	55-0163	Quick disconnect receptacle
3	55-0894	Torch mounting sleeve assembly 2"
	55-0431	Torch mounting sleeve assembly 1-3/4"
4	60-4119	Consumable tool
5	60-0000	Water tube tool
	55-8546	Leads 25' (7.5m) (Other lengths available. Call for information)
	55-8547	Leads 50' (15m) (Other lengths available. Call for information)
		Torch kit: Bullet plugs, O-rings, Water tube, Seal

† American Torch Tip Company is in no way affiliated with the above-named manufacturer(s). References to the above-named machines, torches and numbers are for your convenience only. American Torch Tip is not necessarily authorized by the above-named manufacturer(s) to provide replacement parts. Most parts advertised for sale are made by, or for, American Torch Tip Company and other parts, as indicated, are original parts manufactured by the above-named OEM and are simply being resold by American Torch Tip Company. Part numbers followed by an * are manufactured by the respective OEM.