

AMERICAN TORCH TIP **ATTC**<sup>®</sup>

CREATING A BETTER EXPERIENCE



**PHD**<sup>™</sup>



High Density  
**PLASMA**

TORCHES & CONSUMABLES

AMERICAN TORCH TIP<sup>®</sup>

6212 29th Street East, Bradenton, FL

941-753-7557

Sales@attcusa.com

AmericanTorchTip.com



## 50 - 260 AMP TORCH KITS

Part #	Amp	Power Supply	Plasma Gas	Shield Gas	Material	Notes
60-9951	260	260	O <sub>2</sub>	Air	Mild Steel	
60-9952	200	260	O <sub>2</sub>	Air	Mild Steel	
60-9953	130	260	O <sub>2</sub>	Air	Mild Steel	
60-9954	80	260	O <sub>2</sub>	Air	Mild Steel	
60-9905	50	260	O <sub>2</sub>	Air	Mild Steel	
60-9907	260	260	O <sub>2</sub>	Air	Mild Steel	Bevel
60-9910	130	260	O <sub>2</sub>	Air	Mild Steel	Bevel

### PLASMA HIGH DENSITY

#### LOWER OPERATING COSTS

- Bevel less than 2°
- Minimal dross

#### LIFETIME WARRANTY

- The best torch warranty in the industry

#### MADE IN THE USA

- Engineered to stringent tolerances

#### QUALITY CHECKED

- All consumables are tested for dimensional accuracy



Qty	Parts
1	Torch Body
10	Electrodes
10	Nozzles
2	Swirl Rings
1	Nozzle Retaining Cap
2	Shields
1	Shield Cap
1	Consumables Removal Tool
1	Water Tube Removal Tool
1	1/4 oz. Silicon Lubricant
1	O-ring Kit

### CLEANCUT™ TECHNOLOGY

#### Upgrade Your Consumables

CleanCut™'s patented nozzle and electrode allow your consumables to run longer and cut cleaner making for less downtime and post grind clean-up.

**Learn more at:**  
[AmericanTorchTip.com/cleancut](http://AmericanTorchTip.com/cleancut)



† American Torch Tip Company is in no way affiliated with the above-named manufacturer(s). References to the above-named machines, torches and numbers are for your convenience only. American Torch Tip is not necessarily authorized by the above-named manufacturer(s) to provide replacement parts. Most parts advertised for sale are made by, or for, American Torch Tip Company and other parts, as indicated, are original parts manufactured by the above-named OEM and are simply being resold by American Torch Tip Company. Part numbers followed by an \* are manufactured by the respective OEM.

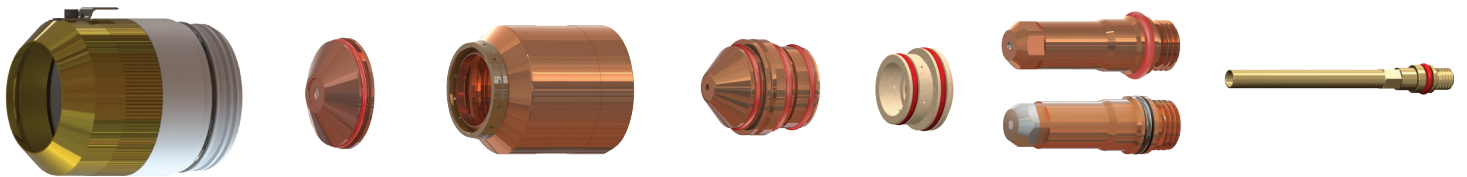
## 30 - 130 AMP CONSUMABLES



(Typical setup shown. Parts for your application may look slightly different)

Amps	Shield Cap	Shield	Nozzle Retaining Cap	Nozzle	Swirl Ring	Electrode	Water Tube
<b>Mild Steel</b>							
30	60-0173	60-0194	60-0313	220193*	60-0180	60-0192	60-0340
50	60-0173	60-0555	60-0313	60-0554	60-0553	60-0552	60-0340
80	60-0173	60-0189	60-0176	60-0188	60-0179	60-0187 60-0566 (CleanCut™)	60-0340
130	60-0173	60-0183	60-0176	60-0182	60-0179	60-0181 60-0665 (CleanCut™)	60-0340
<b>Stainless Steel</b>							
45	60-0173	60-0202	60-0304	60-0201	60-0180	60-0308	60-0340
80	60-0173	60-0338	60-0304	60-0337	60-0179	60-0339	60-0340
130	60-0173	60-0198	60-0304 (H35) 60-0176 (N <sub>2</sub> )	60-0197	60-0179	60-0307	60-0340
<b>Aluminum</b>							
45	60-0173	60-0202	60-0176	60-0201	60-0180	60-0308	60-0340
130	60-0173	60-0198	60-0304 (H35) 60-0176 (Air)	60-0197	60-0179	60-0307 (H35) 60-0181 (Air)	60-0340

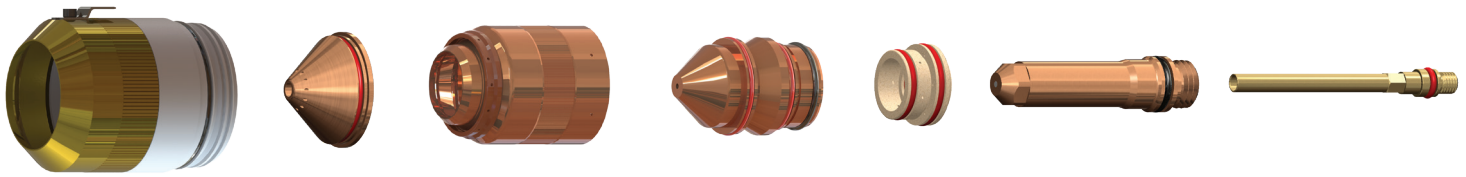
## 200 - 260 AMP CONSUMABLES



(Typical setup shown. Parts for your application may look slightly different)

Amps	Shield Cap	Shield	Nozzle Retaining Cap	Nozzle	Swirl Ring	Electrode	Water Tube
<b>Mild Steel</b>							
200	60-0398	60-0356	60-0355	60-0354	60-0353	60-0352 60-0666 (CleanCut™)	60-0340
260	60-0398	60-0440	60-0433	60-0439	60-0436	60-0435 60-0668 (CleanCut™)	60-0340
<b>Stainless Steel</b>							
200	60-0398	60-0345	60-0344	60-0343	60-0342	60-0307	60-0340
260	60-0398	60-0407	60-0344	60-0406	60-0405	60-0307	60-0340
<b>Aluminum</b>							
200	60-0398	60-0345	60-0347	60-0346	60-0342	60-0307	60-0340
260	60-0398	60-0407	60-0344	60-0406	60-0405	60-0307	60-0340

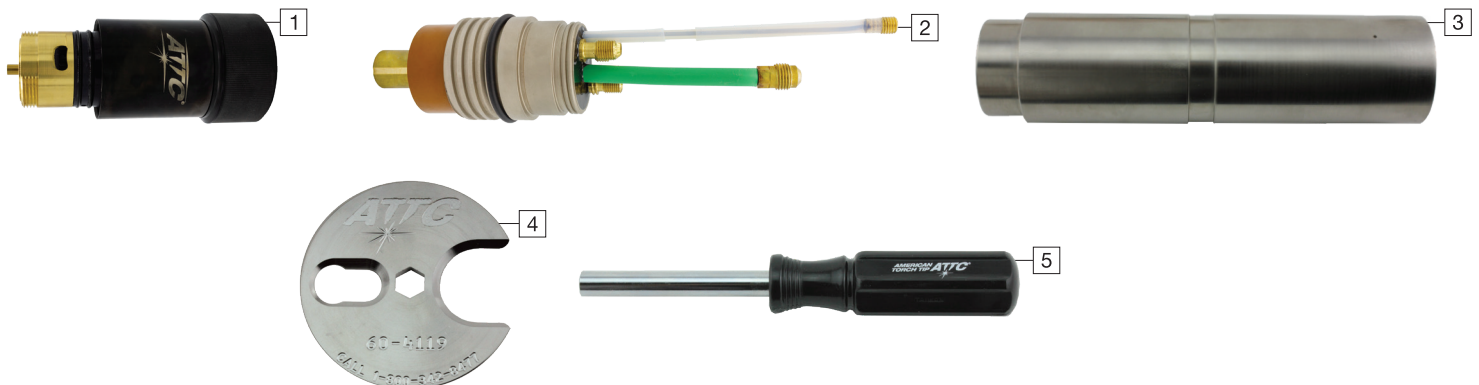
## 130 - 260 AMP BEVELING CONSUMABLES



(Typical setup shown. Parts for your application may look slightly different)

Amps	Shield Cap	Shield	Nozzle Retaining Cap	Nozzle	Swirl Ring	Electrode	Water Tube
<b>Mild Steel</b>							
130	60-0398	60-0545	60-0603	60-0646	60-0179	60-0649	60-0571
260	60-0398	60-0545	60-0603	60-0542	60-0436	60-0541	60-0700
<b>Stainless Steel</b>							
130	60-0398	60-0609	60-0608	60-0656	60-0179	60-0606	60-0571
260	60-0398	60-0609	60-0608	60-0607	60-0405	60-0606	60-0571

## PHD® PARTS & ACCESSORIES



Pos	Part #	Desc
1	60-0162	Torch body
2	60-0163	Quick disconnect receptacle
3	90-0788	Torch mounting sleeve assembly Short 4.5"
	90-0789	Torch mounting sleeve assembly Standard 7"
	90-0790	Torch mounting sleeve assembly Long 9"
4	60-4119	Consumable tool
5	60-0000	Water tube tool
	90-8879	Torch kit: O-rings, Water tube, Seal
	90-8880	Quick disconnect kit: O-ring, Connector

† American Torch Tip Company is in no way affiliated with the above-named manufacturer(s). References to the above-named machines, torches and numbers are for your convenience only. American Torch Tip is not necessarily authorized by the above-named manufacturer(s) to provide replacement parts. Most parts advertised for sale are made by, or for, American Torch Tip Company and other parts, as indicated, are original parts manufactured by the above-named OEM and are simply being resold by American Torch Tip Company. Part numbers followed by an \* are manufactured by the respective OEM.