

VIRTUALLY INDESTRUCTIBLE

SPECS

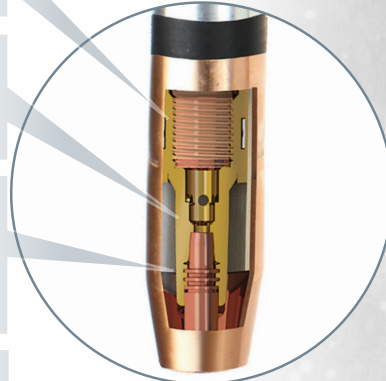
Inner Armor

Protective inner armor – a brass alloy insert – guards against wear and extends nozzle life.

The cool-running Lightning[®] tapered-seat contact tip is designed to dissipate heat quickly through increased surface area, and maximize electrical conductivity.

Dual start-point threads allow re-seating of the tip when wire wear begins to affect performance. Just rotate the tip counter-clockwise 180° to a new wear-point and double the life of the contact tip.

Insulated aircraft aluminum protects the 650 AMP capacity gooseneck.



Hard Body

Lifetime Warranty on gun body. Fiber reinforced resin stands up to extreme heat and impact. Slim compact design. Lifetime Warranty on gun body.

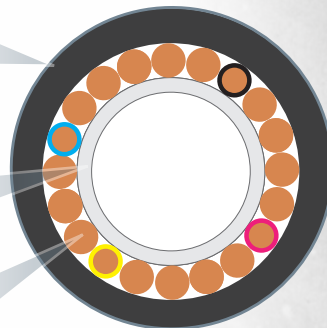


Defensive Shield

The secret behind Lightning[®]'s super tough cable is electron-beam accelerators that modify and strengthen the outer cover. This protective shield guards against tearing, stretching and abrasion.

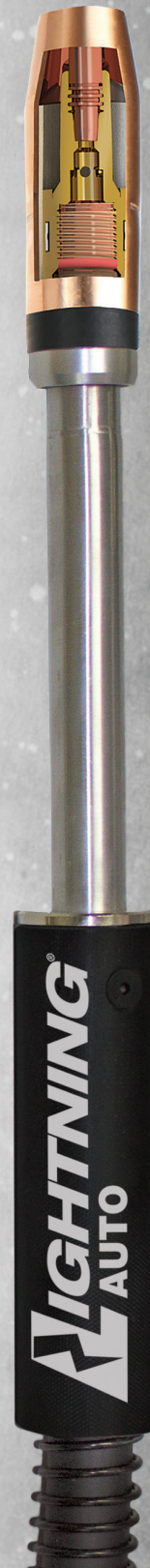
Inner tubing, made of Hytrel[®],* is kink and impact resistant for smooth and reliable wire feed.

Copper strand-count and gauge is optimized for each cable's amperage rating, resulting in a perfect blend of flexibility and strength.



Plug-and-Play

Lightning[®] is ready to work right out of the box with most popular welding systems. Components are designed for quick, easy switch-outs.



Type
Automatic/
Machine
Air-cooled

Amperage
500

Cable Length
4' – 15', plus
custom lengths

Gooseneck
180°, 22°, 45°, 60°

Wire Size
.030 – .052
1/16" – 5/64"

Compatibility
Compatible with a
complete range of
welding machines
and wire feeders

*Hytrel[®] is manufactured by DuPont[™] and is a trademark of DuPont. American Torch Tip Company is in no way affiliated with DuPont.

More information, contact tips, nozzles, and gun part numbers – page 2

Lightning® AUTO MIG Torch



Lightning® Nozzle Selector Chart (slip-on)

Standard Duty Nozzle Part #	Bore/Material	O.D. / Length	Tip Location
63-2138	3/8" Copper	.938" / 2.75"	Flush
64-2950	1/2" Brass	.938" / 2.63"	1/8" Stick out
63-2950B	1/2" Brass	.938" / 2.88"	1/8" Recess
63-2150	1/2" Copper	.938" / 2.88"	1/8" Recess
63-2762	5/8" Copper	.938" / 2.51"	1/4" Stick out
63-2662	5/8" Copper	.938" / 2.63"	1/8" Stick out
63-2162	5/8" Copper	.938" / 2.88"	1/8" Recess
63-2175	3/4" Copper	.938" / 2.88"	1/8" Recess
Heavy Duty Nozzle Part #	Bore/Material	O.D. / Length	Tip Location
65-2550	1/2" Copper	1.062" / 2.88"	1/8" Recess
65-2662	5/8" Copper	1.062" / 2.63"	1/8" Stick out
65-2362	5/8" Brass	1.062" / 2.63"	1/8" Stick out
64-2962	5/8" Copper	1.062" / 2.75"	Flush
65-2862	5/8" Brass	1.062" / 2.75"	Flush
63-2362	5/8" Brass	1.062" / 2.88"	1/8" Recess
65-2562	5/8" Copper	1.062" / 2.88"	1/8" Recess
64-2562	5/8" Copper	1.062" / 3.00"	1/4" Recess
65-2575	3/4" Copper	1.062" / 2.88"	1/8" Recess
65-2375	3/4" Brass	1.062" / 2.88"	1/8" Recess
64-2575	3/4" Copper	1.062" / 3.00"	1/4" Recess
64-2387	7/8" Brass	1.062" / 3.00"	1/4" Recess
65-2562-T *	5/8" Copper	1.062" / 2.78"	1/8" Tip Recess

* Threaded versions available for all nozzles - add "T" to part #

Amperage Ratings (duty cycle)

100% Duty Cycle		60% Duty Cycle	
Co2	Mixed Gas	Co2	Mixed Gas
500 amps	350 amps	650 amps	500 amps

If you don't see what you're looking for, please call us at 800-342-8477.

Mig Gun Part Numbering System

LIGHTNING HANDLE	POWER PIN	GUN MODEL	CABLE LENGTH	WIRE SIZE	GOOSENECK (OPT)
L - Lightning Auto	M - Miller	53 - 500 amp	03 3 feet	30 .030"	500 180°
	LN - Lincoln		3.5 3.5 feet	35 .035"	522 22°
	E - Euro		04 4 feet	40 .040"	545 45°
	T - Tweco		06 6 feet	45 .045"	560 60°
	5T - Tweco #5		08 8 feet	52 .052"	
	P - Panasonic		10 10 feet	116 1/16"	
	B - Bernard		12 12 feet	332 3/32"	
	H - Hitachi		15 15 feet	364 3/64" al	
				564 5/64"	

Lightning® Contact Tips

Part #	Contact Tip - Size
63-1130	Contact Tip HD .030 pk 10
63-1135	Contact Tip HD .035 pk 10
63-1135-40	Contact Tip HD .035 / .040 I.D. pk 10
63-1138	Contact Tip .030 Pk 10 Robotic
63-1140	Contact Tip HD .040 pk 10
63-1145	Contact Tip HD .045 pk 10
63-1147	Contact Tip HD 3/64" al pk 10
63-1152	Contact Tip HD .052 pk 10
63-1162	Contact Tip HD 1/16" pk 10
63-1168	Contact Tip HD .068 / .078 I.D. pk 10
63-1172	Contact Tip HD .072 pk 10 SPECIAL
63-1178	Contact Tip HD 5/64" pk 10
63-1193	Contact Tip HD 3/32" pk 10
Part #	Tapered Tip - Size
63-12XX	XX = use suffix from chart above
Part #	Heavy Duty Tip - Size
63-13XX	XX = use suffix from chart above
Part #	Extra Heavy Duty Tip - Size
65-11XX **	XX = use suffix from chart above

Lightning Retaining Heads / Diffusers

Part #	Description
65-3103 **	Retaining Head for Extra Heavy Duty
63-3104	Nozzle Retainer (25)
63-3103	Retaining Head
63-3103-2	Retaining Head
63-3116	Thread-on Retaining Head HD
63-3402	Retaining Ring
63-3301	O-ring Orange 016

** These components must be used together

Lightning® Goosenecks

Part #	Size
65-5100A Fixed	180°
65-5122A Fixed	22°
65-5145A Fixed	45°
65-5160A Fixed	60°